



K-FLEX USA
INNOVATION IN INSULATION

PLUMBING

HVAC/R

COMMERCIAL/INDUSTRIAL

MARINE

OIL&GAS

SOLAR

www.kflexusa.com

1-800-765 6475

INSTALLATION GUIDE

for K-Flex Solar® Quick Fit Couplings

K-FLEX SOLAR™ ST - TWIN SOLAR

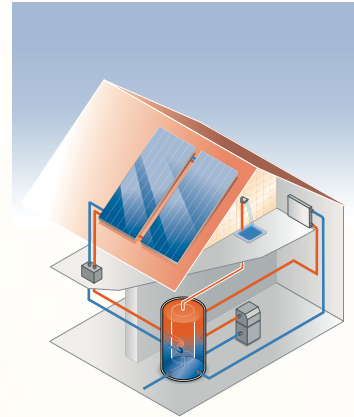


INSTALLATION INSTRUCTIONS

K-Flex Solar™ Quick Fit Couplings (1 set) comes standard with K-Flex Solar™ Twin System.

Standard K-Flex Solar™ - Coupling system is supplied to fit the stainless steel flex tubing and NPT copper sizes.

K-Flex Solar™ - Couplings can be purchased separately and in special sizes if needed.



K-FLEX SOLAR™ - COUPLINGS



STEP 1: Cut the steel tube using a plumbing cutter to achieve a perfectly perpendicular cut to the tube. Use the appropriate safety equipment (gloves, glasses, etc.) during the operations in order to avoid any accidents.



Clean the cut tube well using a file or pipe reamer in order to avoid any burrs (featheredge) on the steel tube.

STEP 2: Put the nut on the steel tube.



STEP 3: Place the two half-parts of the split ring on the steel tube, as shown, ensuring that the convex side faces the edge of the tube.



STEP 4: The two split rings must be placed on the first thread of the steel tube.



STEP 5: Push the nut towards the end of the steel tube so that the split ring blocks the nut (ensuring inside support).



STEP 6: Manually screw the nipple onto the nut by firmly holding the nut and rotating the nipple clockwise.

Use two wrenches for tightening the nipple following the recommended torque shown on the table.

COUPLING SYSTEM TIGHTENING TORQUE

DN	Nm	Lb - Ft
16	61	45
21	65	48
25	71	52



K-FLEX USA

INNOVATION IN INSULATION

PLUMBING

HVAC/R

COMMERCIAL/INDUSTRIAL

MARINE

OIL&GAS

SOLAR

ABOUT US

K-Flex USA is leading the market in innovative, elastomeric, closed-cell foam insulation. We ensure our customers' satisfaction by providing superior products with a systematic approach.

OUR MISSION STATEMENT

K-Flex USA's mission is to drive the growth and innovation of the North American elastomeric insulation market through a commitment to:

- Our customers - by providing reliable, sustainable, and easy-to-use products.
- Our associates - by empowering them and providing them with a safe, secure, and rewarding work environment.
- Our community and the environment - by being a socially responsible corporate citizen.



K-FLEX USA

100 Nomaco Drive, Youngsville, NC 27596

www.kflexusa.com

800.765.6475



KFPS-0171-0809